

NO BARK COLLAR

OWNER'S MANUAL



Dogtra Company

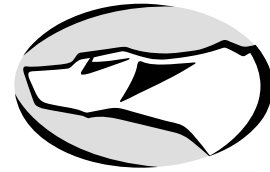
1250 E. 223rd Street, Suite 119
Carson, CA 90745

Tel : (310) 522-1800

Fax : (310) 522-1805

Web Site : www.dogtra.com

Toll Free: 1-888-811-9111



MODEL YS 500



INTRODUCTION

Congratulations on your purchase of the “Yapper Stopper” Model YS500.

This product has been specifically designed to prevent your dog from barking excessively. It automatically emits electrical stimulation in response to the dog’s barking.

Instructions are included. Please read them thoroughly before using your “Yapper Stopper”.

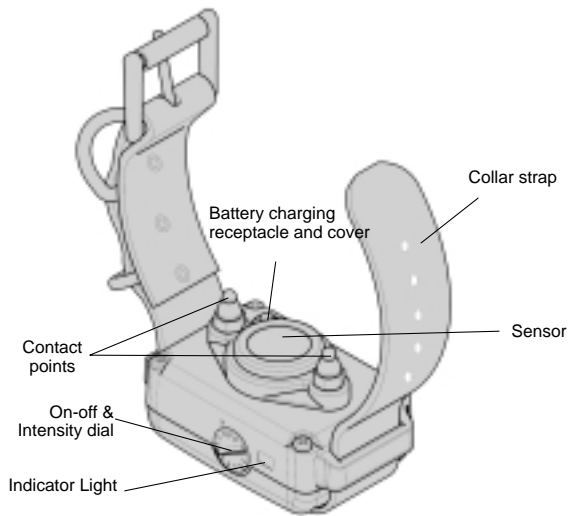
PRODUCT FEATURES

- Safety feature included
(2-Second delay)
- Easy ON/OFF switch
- 7 levels of stimulation intensity
- Size - 2.63" × 1.81" × 1.14"
- Light weight - 6.6 ounces
- Convenient dial that controls the ON/OFF function and the seven intensity levels
- Waterproof collar
- Thirty-day satisfaction guaranteed
- One-year warranty

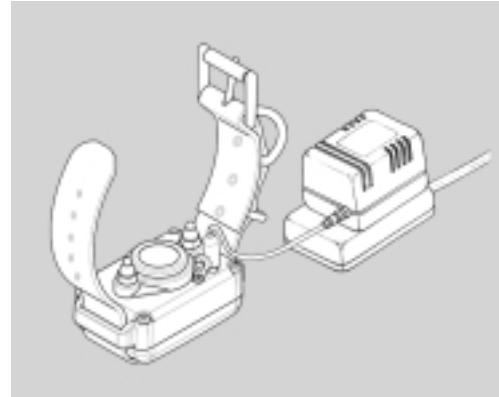
CONTENTS

- Yapper Stopper with collar strap
- Rechargeable battery & charger
- Test tool
- Owner's manual

OPERATION



TO RECHARGE THE BATTERIES

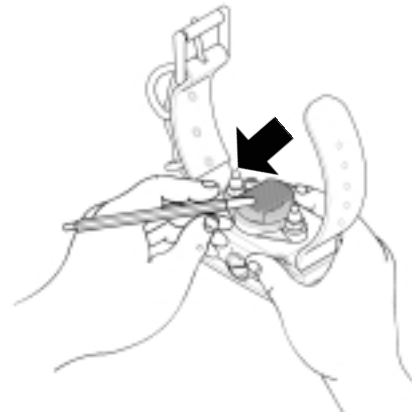
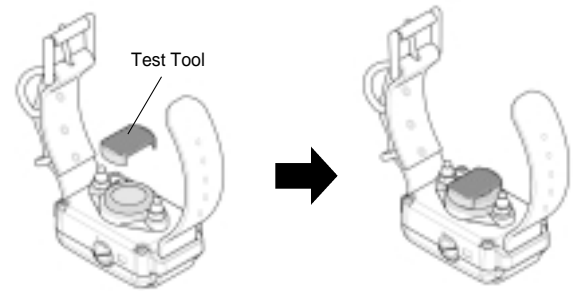


1. Connect AC Adapter to the battery charging receptacle on the unit.
2. Plug AC Adapter into an electrical power outlet of ordinary household voltage (110V) and recharge the battery unit for 10 hours.
3. Recharge the battery unit for 10 hours once every 15 days at room temperature during heavy usage.

4. If the AC adapter is left plugged into the battery unit over 4 days (96 hours), this may cause serious damage to the battery cell. For long term storage, it is necessary to charge the battery for at least fourteen hours once each month and to store it at room temperature.
5. The battery unit has been partially charged prior to shipment. It is necessary, however, to recharge the battery 15-20 hours before initial use.

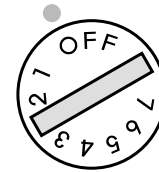
CAUTION : Do not recharge the battery in a hazardous place. Do not expose the AC adapter to water.

Testing The Yapper Stopper

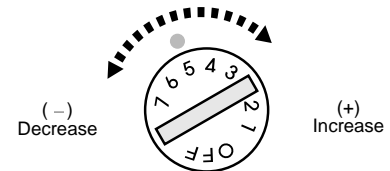


- 1) Turn on the “Yapper Stopper” by turning the intensity dial clockwise and set it on level seven.
- 2) Fit the test tool on the sensor of the collar.
- 3) Test by scratching the rough surface of the test tool on the collar (as shown in the diagram) using a fingernail or pen. When the light comes on, wait for two seconds, then repeat the same process once more.

SELECTING ON-OFF & INTENSITY LEVELS.



- The dial on the collar is used to turn the “Yapper Stopper” on and off and for selecting the intensity level.
- To turn off the “Yapper Stopper”, position as shown above.



- Level 1 is lowest and 7 is the highest.
- By turning the ON/OFF dial clockwise with your thumbnail, stimulation intensity increases and by turning counter-clockwise, it decreases.

NOTICE :

- When first using the “Yapper Stopper”, it is recommended that you start with the lowest level.
- If the dog continues to bark, gradually increase the intensity level.

CONTACT POINTS

- The contact points must make good contact with the skin for the unit to function properly.

IMPORTANT : When screwing in the contact points, tighten by hand only.

FITTING THE COLLAR

- Tighten the collar around the dog’s neck so that the points are in contact with the dog’s skin.
- If the collar is too loose, the dog will not receive correction when it barks.
- Check the dog’s neck daily for possible irritation caused by the contact points rubbing the skin.
- Do not leave the collar on for more than eight hours a day.

IMPORTANT : Remove any other collars from your dog when it is wearing the Yapper Stopper. A metal collar or metal buckle that rubs against the Yapper Stopper bark sensor may inadvertently activate the unit.

MAINTENANCE

- Periodically wash the “Yapper Stopper” with alcohol or detergent. Before washing, make sure that the battery cap is tightened.
- Dry thoroughly after washing.

SAFETY PRECAUTIONS

- Your “Yapper Stopper” is a valuable training aid when used correctly. Please read the information on operating the Yapper Stopper before putting it on your dog.
- To prevent skin irritation, the collar should not be worn more than eight hours at a time.
- Also, it is best to move the location of the contact points every few hours. To do this, take the collar off and then put it back on so that the contact points are in a different location on the neck.
- If skin irritation is found, wash the area and rinse with hydrogen peroxide. Apply an antibiotic ointment. Temporarily discontinue using the collar until the skin has healed.
- Use the right length of contact points. The collar comes installed with contact points that are best for the majority of dogs.
- Proper collar strap tightness is extremely important. If the collar is too loose, it will not function properly and it may rub as the dog moves, causing irritation.

PRODUCT SAFETY AND HEALTH STATEMENTS

- **dogtra** collars use state-of-the-art micro-technology.
- **dogtra** collars are intended for the sole use for training dogs.
- Do not attempt to test **dogtra** collars on humans or other animals.
- Dogs should be in good health during any e-collar training.
- **dogtra** collars are not intended for use on dogs weighing less than 12 pounds or less than 6 months of age.
- Discontinue use if signs of irritation begin to appear on the dog's skin around the neck caused by rubbing action of the contact points.

TROUBLESHOOTING

- If the “Yapper Stopper” doesn’t appear to be working:
 - Adjust collar fit
 - Recharge the battery
 - Call Dogtra “Help!” line
Toll free 1-888-811-9111

WARRANTY AND REPAIR

WARRANTY REPAIR

Dogtra Company provides the original purchaser a one-year limited warranty on parts and labor from the date of original purchase. A sales receipt with purchase date will be required, as well as a brief note explaining the problem.

- The warranty does not cover failure resulting from damage, abuse or loss of parts.
- The warranty is void if the unit has been altered or an unauthorized person has attempted repair.

OUT OF WARRANTY REPAIR

- For repair work that is no longer covered by the warranty, the cost of repair will include parts, labor, and shipping. Please include a note explaining the problem. Be sure to include your name, address and phone number.
Repairs may be sent to the following address.

A self-addressed stamped envelope should be sent to :



Dogtra Company

1250 E. 223rd Street, Suite 119
Carson, CA 90745
Tel : (310) 522 - 1800
Fax : (310) 522 - 1805
Web Site : www.dogtra.com
Toll Free : 1-888-811-9111